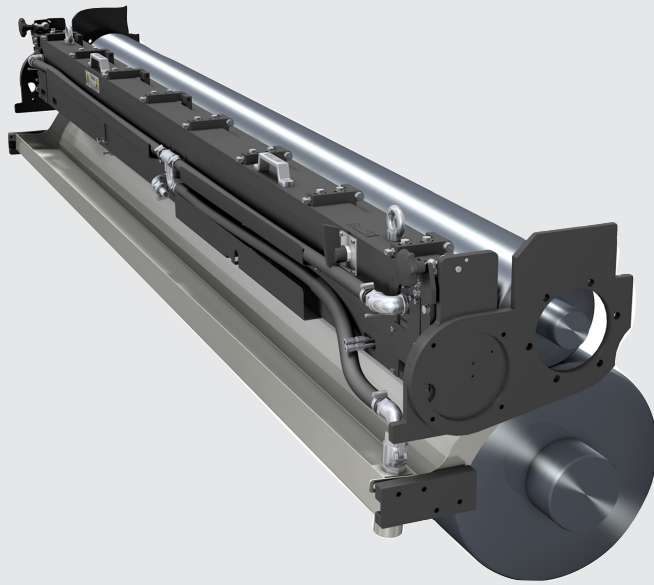


**TRESU**



Solutions for flexo and  
special printing applications

# The best solutions for flexo and special printing applications

TRESU is the world's leading supplier of chamber doctor blade systems, along with a wide range of ancillary products including ink and coating systems, drying systems, and printing plate cleaning systems.

With constant focus on innovation, cutting-edge technology, design, performance, and optimization of the printing process, TRESU Ancillary products set the benchmark by meeting the

demands of all market segments within the flexo and special printing industry.

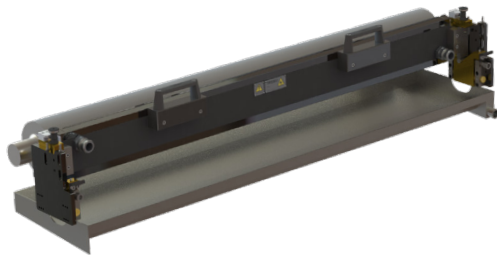
We offer know-how and experience to meet the specific requirements of flexo and coating machine manufacturers, print and special printing companies and individual customers worldwide.

## Chamber doctor blade systems



### TRESU UniPrint Combi · Chamber doctor blade system

- Pressure control technology for foam elimination of sensitive coatings
- Pneumatic and air lock, mechanical locking system.
- Streamlined and compact design for perfect handling
- For water-, UV- and solvent based inks and coatings
- Patented TRESU seals guaranteeing authentic quality
- Patented TRESU E-Line clamping system for fast doctor blade change and high quality doctoring
- Anilox width: up to 1200mm. - Anilox Ø: 80 - 250mm.



### TRESU FlexiPrint Basic · Chamber doctor blade system

- Mechanical loading system
- Patented TRESU E-Line clamping system for fast doctor blade change and high quality doctoring
- Standardized, compact construction with excellent price/performance ratio
- For water-, UV- and solvent based ink and coatings
- Patented TRESU seals guaranteeing authentic quality



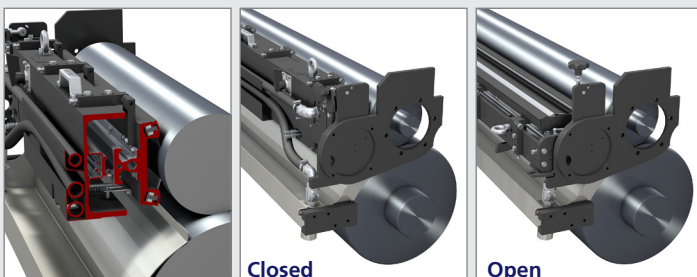
### TRESU UniPrint · Chamber doctor blade system

Universal chamber construction, customized for any application and printing press

- Patented TRESU seals guaranteeing authentic quality
- Open or closed ink circulation system
- For water-, UV- and solvent based inks and coatings, acids, glue and other materials
- Up to 1000 m/min mechanical and pneumatic loading systems
- Doctor blade quick change systems: S-Line; E-Line and P-Line
- For special applications: S-Line chamber in stainless steel
- Anodized, Teflon and Ceraflex corrosion surface protection or CFC carbon fibre materials
- From 100 mm up to 6000 mm

### UniPrint C

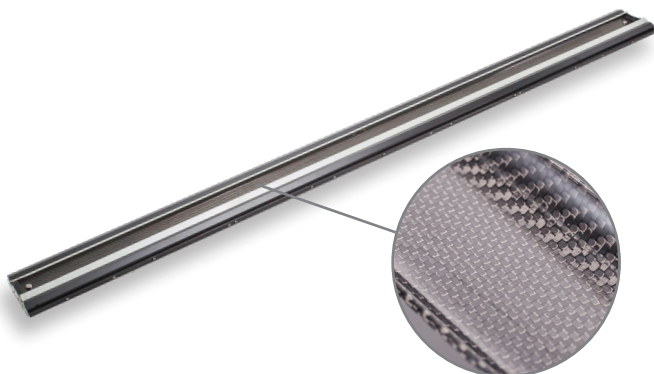
Robust, stable and COMPACT suspension for wide web machines with limited space



### UniPrint B

Universal, robust and stable BEAM suspension with easy access and maintenance





#### **TRESU FlexiPrint IMW · Chamber doctor blade system**

- Streamlined and compact design for very easy handling
- TRESU FlexLoc mechanical loading system
- Specially for In-line mid-web Flexo machines
- Patented TRESU E-Line clamping system for fast doctor blade changes
- Patented TRESU seals guaranteeing authentic quality
- For water-, UV- and solvent based inks and coatings
- Open or closed ink circulation system

#### **TRESU FlexiPrint Reservoir · Chamber doctor blade system**

- Mechanical loading system
- No circulation pump necessary inks is kept in the chamber reservoir
- For water based, solvent and UV- Inks/coatings
- Less ink consumption and fast job change
- Patented TRESU E-Line clamping system for fast doctor blade change and high quality doctoring
- Patented TRESU seals guaranteeing authentic quality

#### **TRESU SAVEink · Chamber doctor blade system**

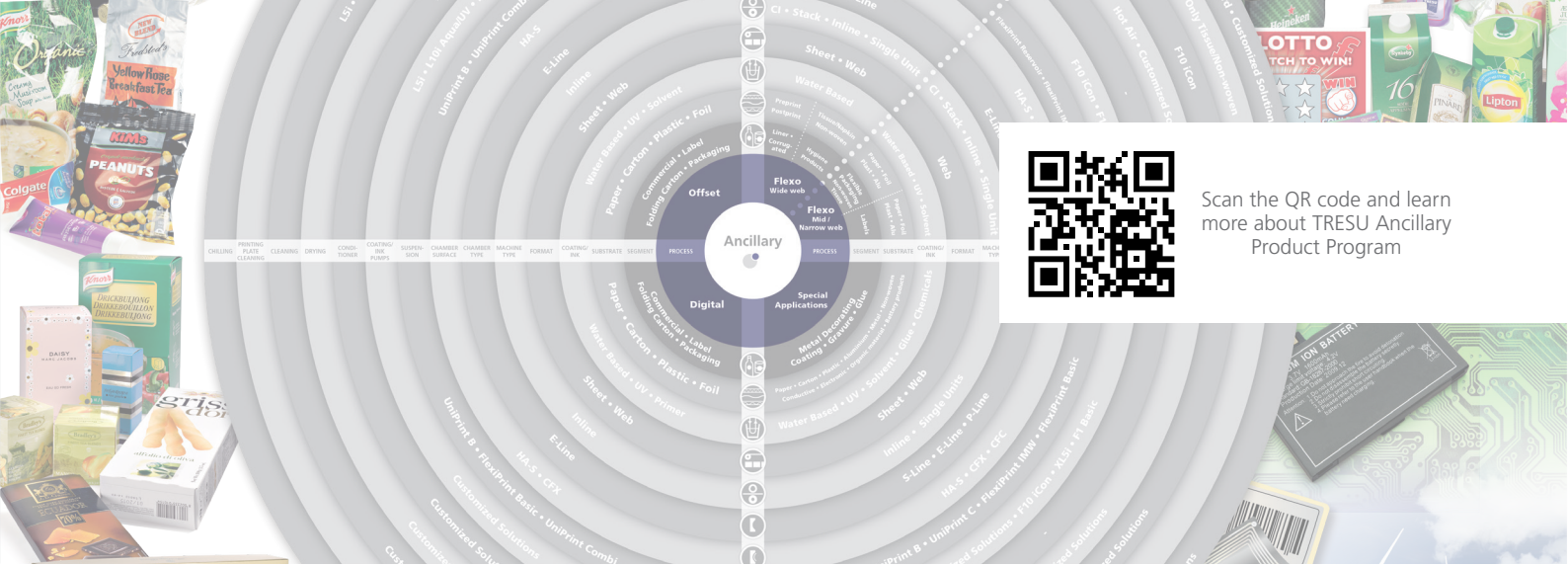
The TRESU SAVEink chamber doctor blade is designed as a lightweight fast-change inking system for narrow web flexo printing to help you achieve optimum performance of the printing without using an ink pump.

- Air-tight chamber
- Safely removal in five seconds without ink spilling
- The chamber can hold 250ml - 2000ml of ink
- Very easy handling
- Streamlined and compact design
- High quality doctoring for perfect printing
- For water based, solvent and UV- Inks/coatings
- Patented TRESU seals guaranteeing authentic quality

#### **TRESU CFC · Carbon fiber chamber doctor blade system**

The lightweight carbon fiber chamber doctor blade system offers corrosion resistance, controlled flow and easy handling

- The carbon fibre composition ensures high-strength and anti-corrosion chamber qualities
- The design enables waterbased ink and coating circulation in optimum volumes
- The ink-repellent surface offers extra protection against ink and detergents with high and low pH-values
- Curved inner surfaces minimize volume, control discharge, and enable perfect cleaning
- For all printing and coating units
- Easy handling



Scan the QR code and learn more about TRESU Ancillary Product Program



### P-Line - TRESU Chamber quick clamping system

The P-Line chamber system is equipped with pneumatic doctor blade clamping system. This allows quick changeovers of the doctor blades and simple and quick cleaning. Downtime of the printing machine can therefore be reduced considerably.

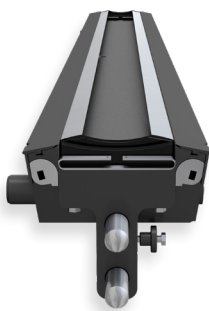
- Pneumatic clamping system
- For widths up to 6000 mm
- Patented by TRESU
- Blade change in less than one minute
- No screws



### TRESU Seal

The TRESU Seal ensures the highest sealing quality and longest life time.

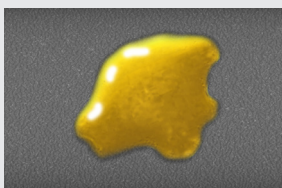
- ATEX certification is optional
- Customized OEM solutions for projects and mass production equipment
- Perfect sealing
- Long lifetime
- Tool-free system, easy to change, and easy to clean
- Pressure control technology. Foam-free ink/coating laydowns at high speed
- Multiple perfect fit. Compatible with several anilox diameters/blade sizes



### E-line - TRESU Chamber quick clamping system

The E-Line TRESU Chamber Doctor Blade System with patented TRESU Doctor Blade Quick Change System. The fixing of blades is carried out by an eccentric clamping mechanism. Which allows de-mounting of the blade holders and blades in just a few seconds. Re-assembly with new blades is just as fast and easy.

- Excentric clamping system
- For widths up to 2000 mm
- Patented by TRESU
- Blade change in less than one minute
- No screws



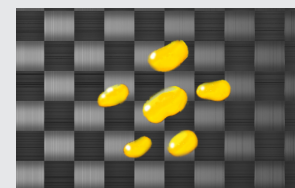
**HA-S**

Hard Anodized-S surface with good repelling capabilities in connection with inking and cleaning procedures



**CFX**

Ceraflex ceramic surface for flexo printing with high corrosion resistance and efficient repelling capabilities in connection with inking and cleaning procedures

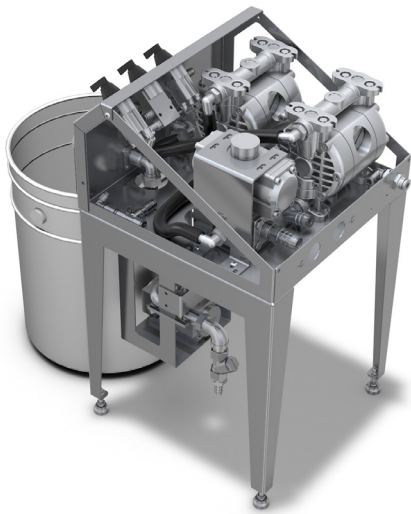


**CFC**

Carbon Fiber Chamber with unique ink-repellent surface and high corrosion resistance for extra protection against ink and detergents

# Ink supply systems

TRESU Ink supply systems can be used for all CI, stack and inline or stand alone machines. As integrated or as a stand-alone unit.



## **TRESU F1 a basic ink pump for customized solutions - integrated or as stand-alone unit**

- For TRESU Flexi and UniPrint doctor blade systems
- Basic ink supply system
- Flow wash cleaning procedure
- Stand-alone/integrated ink supply
- OEM customized or retrofitted
- Easy to install and maintain
- For flexo printing applications, water/ solvent and UV-based inks and coatings



## **TRESU F10 iCon with ViscoFlow:**

Intelligent ink control and fully automatic cleaning for water- and solvent based flexo printing. The F10 iCon is a lean, innovative solution for safe, stable and controlled ink circulation – with easy handling and increased production output.

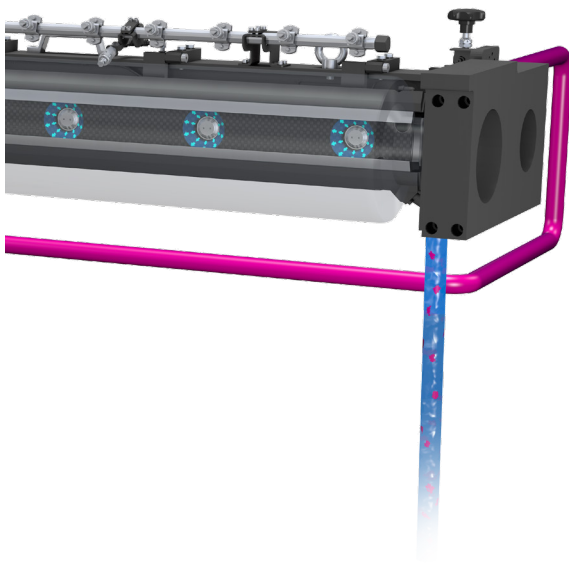
- Quick and reliable automatic ink control
- Consistent ink laydowns
- Fully automatic cleaning procedure
- For water- and solvent based inks
- Energy efficient
- For CI printing machines, stack type presses and other configurations
- Available with pressure controlled ink chambers
- PLC controlled with touch panel display
- InkLink (Ink management system)

## **TRESU MaxiPrint Concept**

Comprised of a closed chamber, an ink supply unit, and a cleaning cycle, MaxiPrint Concept offers fast, automatic internal cleaning, improved print quality consistency and reduced ink loss.

The TRESU MaxiPrint Concept is comprised of a closed light weight carbon fibre or ceramic chamber, an ink supply system and a cleaning system. Suited for wide-web and corrugated flexo applications, the concept offers corrosion-resistance; fast, automatic internal cleaning; improved quality consistency.

- Fast emptying performance completed within 3-5 minutes
- Available in widths of 1600-6000mm
- Streamlined and compact design in closed system
- Improved quality consistency
- Patented TRESU seals guaranteeing authentic quality
- Benchmark for low ink loss, short job changeovers, and efficient cleaning in wide web and corrugated flexo applications

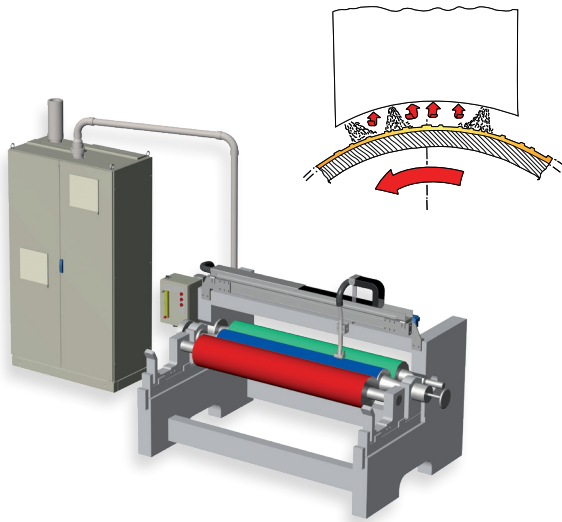


# Printing Plate Cleaner

The fully automatic, contact free, in-line cleaning system for flexo printing plates. It is the only system in the world that cleans the printing plate during production, or performs an intensive post-production cleaning process.

The PPC module is developed to dramatically improve the print quality in the 'dirty' environments of tissue- and napkin printing productions.

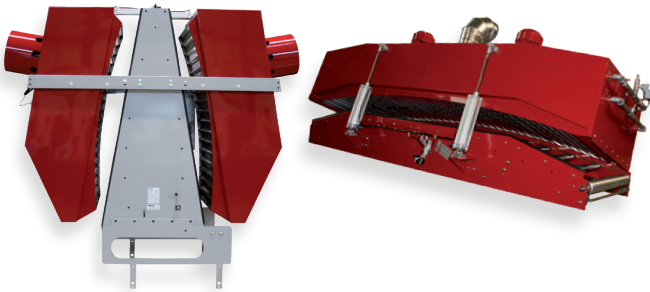
- Standard- and turbo cleaning
- No damages to the printing plates
- High and consistent print quality
- No production downtime due to printing plate cleaning
- No manual cleaning. Safe operation by remote control
- Less production waste
- The PPC base module contains a high pressure pump, a vacuum pump with cyclone and control for individual adjustment and observation of the printing stations.



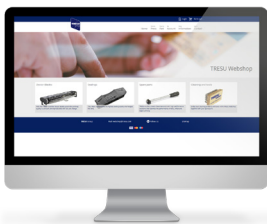
# Drying Technology

TRESU provides standard and customized convention dryers for flexo-, offset-, coating-, and gravure printing presses.

The drying systems are suitable for water-, and solvent-based inks and coatings, and suitable for shrink films, papers and packaging materials.



## TRESU Original Parts Webshop



Order your original spare parts online in the TRESU Webshop and save money.

You can shop by press or by parts  
- directly, conveniently, and secure...

[www.tresu-webshop.com](http://www.tresu-webshop.com)



TRESU Group is a highly specialized company offering flexible, customized solutions of flexo printing machines and high-performance ancillary products for flexo, digital and offset printing to the graphic industry.

TRESU Group has over 35 years of experience and expertise in the development and production of engineered solutions for this industry and supplies directly to end-customers, OEMs and partners.

TRESU  
Venusvej 44  
DK 6000 Kolding  
Denmark  
Tel: +45 76 32 35 00  
Mail: [tresu@tresu.com](mailto:tresu@tresu.com)  
[www.tresu.com](http://www.tresu.com)

TRESU GmbH  
Giftener Str. 9A  
31157 Sarstedt  
Germany  
Tel: +49 5066  
9174286  
Mail: [aju@tresu.de](mailto:aju@tresu.de)

TRESU Italia s.r.l.  
Via delle Groane 27/b  
I-20024 Garbagnate  
Milanese (MI)  
Italy  
Tel: +39 02 96 59 202  
Mail: [tresu@tresu.it](mailto:tresu@tresu.it)

TRESU Japan Co., Ltd.  
8-1-32, Nanko Naka  
Suminoe-ku  
Osaka, 559-0033 Japan  
Tel: +81 6 4703 0601  
Mail: [sales@tresu.jp](mailto:sales@tresu.jp)

TRESU China  
Room 808, Environment  
Building, No.16  
Guangqumennei Street,  
Dongcheng District,  
100062 Beijing  
China  
Tel: +86 (0) 10 65911628  
Mail: [sales@tresu.cn](mailto:sales@tresu.cn)

TRESU Americas  
635 Westport Parkway,  
Suite 300  
Grapevine, TX 76051  
USA  
Tel: +1 214 631 2844  
Mail: [tresu-americas@tresu.com](mailto:tresu-americas@tresu.com)